

MUNG AD 2.19 RADIOAYUDAS PARA LA NAVEGACIÓN Y EL ATERRIZAJE
MUNG AD 2.19 RADIO NAVIGATION AND LANDING AIDS

| <i>Tipo de ayuda MAG VAR Tipo de ILS/MLS</i> | <i>ID</i> | <i>Frecuencia</i> | <i>Horas de funcionamiento</i> | <i>Coordenadas del emplazamiento de la antena transmisora</i> | <i>Elevación de la antena transmisora del DME</i> | <i>Servicio volumen radio de GBAS referencia Punto</i> | <i>Observ.</i> |
|--|-----------|---------------------------|------------------------------------|---|---|--|--|
| <i>Type of aid MAG VAR CAT of ILS/MLS</i> | <i>ID</i> | <i>Frequency</i> | <i>Hours of operation</i> | <i>Site of transmitting antenna coordinates</i> | <i>Elevation of DME transmitting antenna</i> | <i>Service volume radius from GBAS reference Point</i> | <i>Remarks</i> |
| <i>1</i> | <i>2</i> | <i>3</i> | <i>4</i> | <i>5</i> | <i>6</i> | <i>7</i> | <i>8</i> |
| VOR/DME 05° W (2020) | UNG | 115.300 MHZ CH 100X | H24 | 215005.56N 0824651.08W | 30 M (98 FT) | | Cobertura / Coverage 100 NM A |

MUNG AD 2.20 REGLAMENTO LOCAL DEL AERODROMO
MUNG AD 2.20 LOCAL AERODROME REGULATIONS

Pista 18/36 cerrada

Runway18/36 closed.

MUNG AD 2.21 PROCEDIMIENTOS DE ATENUACION DEL RUIDO
MUNG AD 2.21 NOISE ABATEMENT PROCEDURES

NIL

NIL

MUNG AD 2.22 PROCEDIMIENTOS DE VUELO
MUNG AD 2.22 FLIGHT PROCEDURES

NIL

NIL

MUNG AD 2.23 INFORMACION ADICIONAL
MUNG AD 2.23 ADDITIONAL INFORMATION

COORDENADAS DE LOS PUNTOS DE RECORRIDO / WAYPOINTS COORDINATES AD MUNG

| Punto de recorrido/ Waypoint name | Latitud (N) | Longitud (W) | Propósito / Purpose |
|--|--------------------|---------------------|----------------------------|
| ELODU | 21°58'15.79" | 082°37'13.15" | RNP RWY23, VOR RWY23 |
| EMEDO | 21°42'21.08" | 082°56'16.97" | RNP RWY05, VOR RWY05 |
| NG620 | 22°02'45.31" | 082°41'31.14" | RNP RWY23, VOR RWY23 |
| NG621 | 21°53'46.16" | 082°32'55.43" | RNP RWY23, VOR RWY23 |
| NG622 | 21°54'30.07" | 082°41'44.45" | VOR RWY23 |
| NG625 | 21°54'29.95" | 082°41'44.33" | RNP RWY23 |
| NG630 | 21°34'52.86" | 082°55'35.92" | RNP RWY23 |
| NG660 | 21°46'50.39" | 083°00'34.74" | RNP RWY05, VOR RWY05 |
| NG661 | 21°37'51.66" | 082°51'59.47" | RNP RWY05, VOR RWY05 |
| NG665 | 21°45'41.70" | 082°52'16.37" | RNP RWY05, VOR RWY05 |

| Punto de recorrido/ Waypoint name | Latitud (N) | Longitud (W) | Propósito / Purpose |
|--------------------------------------|--------------|---------------|---------------------|
| NG670 | 21°56'45.79" | 082°29'22.14" | RNP RWY05 |

**MUNG AD 2.24 CARTAS RELATIVAS AL AERODROMO
MUNG AD 2.24 CHARTS RELATED TO AN AERODROME**

| <i>Charts</i> | <i>Pages</i> |
|------------------------|------------------|
| AD2 MUNG ADC.pdf | AD 2 MUNG 2 - 1 |
| AD2 MUNG RNP RWY05.pdf | AD 2 MUNG 7 - 1 |
| AD2 MUNG RNP RWY23.pdf | AD 2 MUNG 7 - 5 |
| AD2 MUNG VOR RWY05.pdf | AD 2 MUNG 7 - 9 |
| AD2 MUNG VOR RWY23.pdf | AD 2 MUNG 7 - 11 |
| AD2 MUNG VAC.pdf | AD 2 MUNG 9 - 1 |

**MUNG AD 2.25 PENETRACIÓN DE LA SUPERFICIE DEL SEGMENTO VISUAL (VSS)
MUNG AD 2.25 VISUAL SEGMENT SURFACE (VSS) PENETRATION**

No se aplica / Not applicable



PLANO DE AERODROMO - OACI /
AERODROME CHART - ICAO

21°50'05"N
082°47'02"W

ELEV 24

TWR 118.3

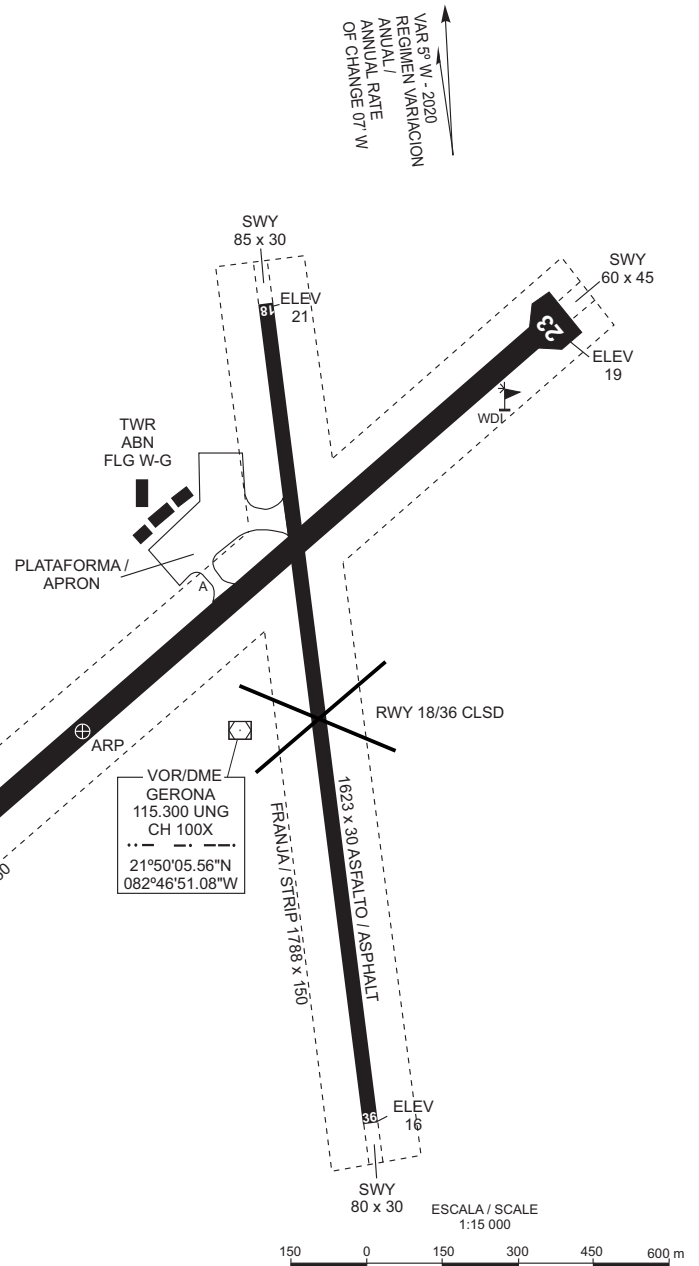
NUEVA GERONA / Rafael Cabrera

| RWY | DIRECCION / DIRECTION | THR | GUND | RESISTENCIA / STRENGTH |
|-----|--------------------------|---------------------------------|--------|---------------------------|
| 05 | 053° | 21°49'37.77"N 082°47'34.18"W | -18.63 | NIL |
| 23 | 233° | 21°50'31.98"N 082°46'29.32"W | -19.34 | |
| 18 | 177° | 21°50'30.27"N 082°46'49.02"W | -18.24 | |
| 36 | 357° | 21°49'38.02"N 082°46'40.94"W | -17.30 | |

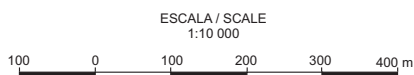
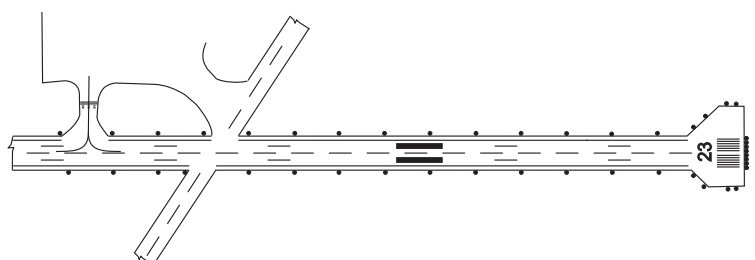
CALLES DE RODAJE ANCHO /
TAXIWAYS WIDE 23

ELEV Y DIMENSIONES EN METROS
BRG MAG /
ELEV AND DIMENSIONS IN METRES
BRG MAG

SISTEMA SENCILLO DE ILUMINACION
DE APROXIMACION /
SIMPLE APPROACH LIGHTING SYSTEM



SEÑALES Y AYUDAS LUMINOSAS RWY 05/23 Y CALLES DE RODAJE DE SALIDA / MARKING AND LIGHTING AIDS RWY 05/23 AND EXIT TAXIWAYS

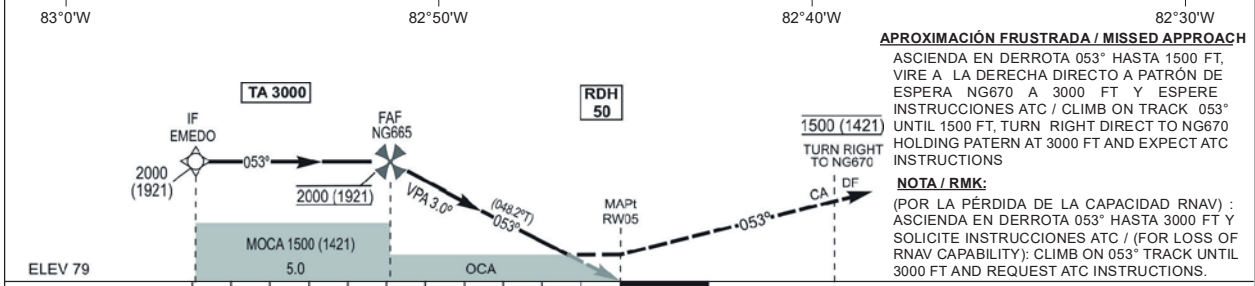
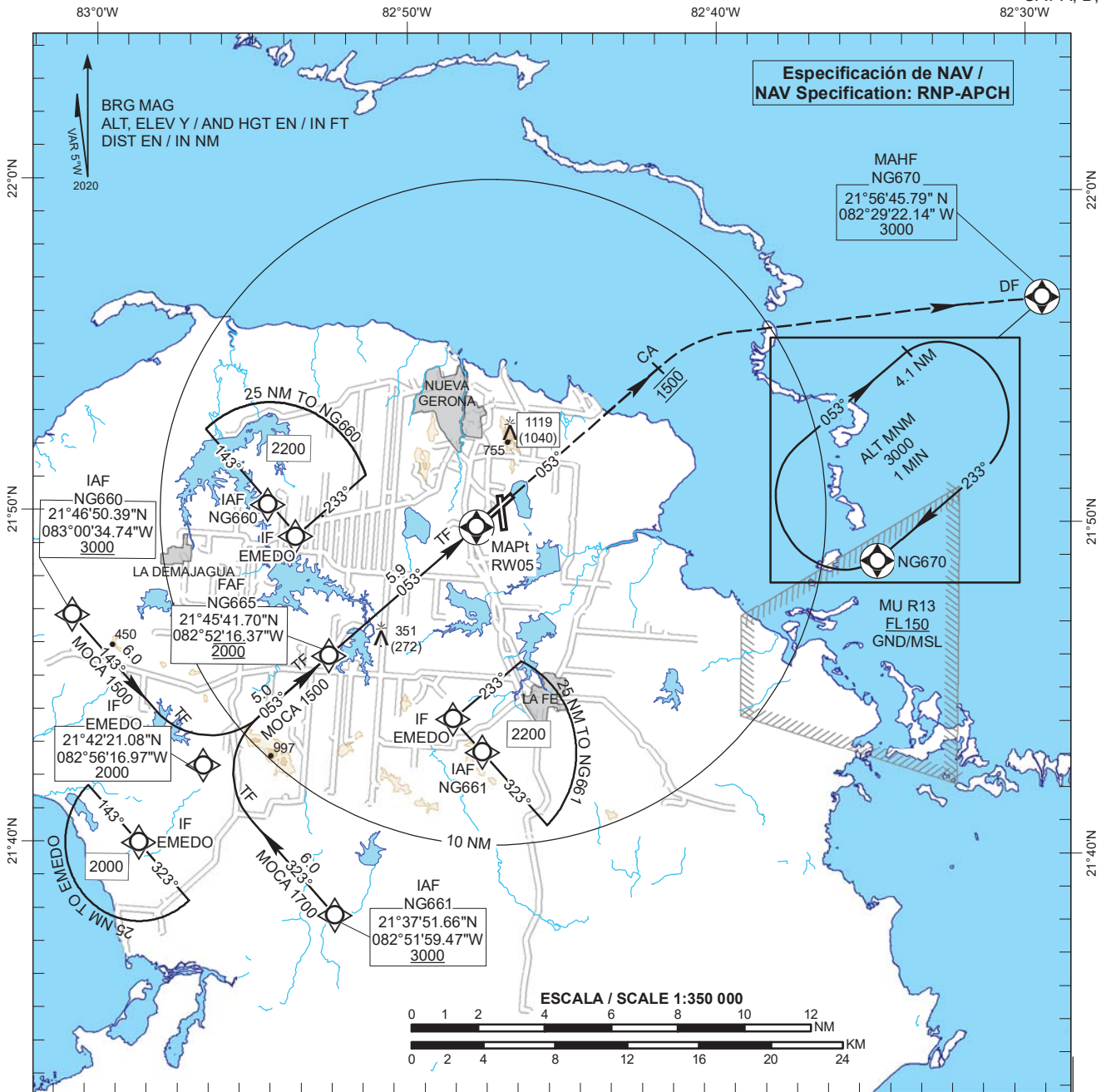


CARTA DE APROXIMACION POR INSTRUMENTOS - OACI /
INSTRUMENT APPROACH CHART - ICAO

ELEV 79
OCH REF THR RWY 05
ELEV 79

APP 120.30
TWR 118.30

NUEVA GERONA / Rafael Cabrera
RNP (LNAV/VNAV; LNAV)
RWY 05
CAT A, B, C, D



| | | | | | | | | | | | | | |
|---------------------|-------------|-------------|-------------|---|----------------------|-------------|-------------|-------------|-----------|------|------|------|-----|
| OCA(H) | A | B | C | D | DISTANCIA / DISTANCE | KT | 80 | 100 | 120 | 140 | 160 | 180 | |
| | | | | | NM | MIN / SEC | 4:24 | 3:22 | 2:56 | 2:31 | 2:12 | 1:58 | |
| LNAV/VNAV | | | | | FAF - RW05 | 5.9 | FT / MIN | 430 | 530 | 640 | 740 | 850 | 960 |
| LNAV | | | | | VSP GS 3.00° | | | | | | | | |
| CIRCULAR / CIRCLING | 1100 (1021) | 1500 (1421) | 1600 (1521) | | NM to RW05 | 5.0 NM | 4.0 NM | 3.0 NM | 2.0 NM | | | | |
| | 5.6 KM | 8.0 KM | 8.6 KM | | ALT / (HGT) | 1720 (1641) | 1400 (1321) | 1080 (1001) | 770 (691) | | | | |

**TABLAS DE CODIFICACIÓN DEL PROCEDIMIENTO DE APROXIMACIÓN POR INSTRUMENTOS RNP /
RNP INSTRUMENT APPROACH PROCEDURE CODING TABLES.
MUNG RWY 05. NUEVA GERONA / RAFAEL CABRERA.**

IAF NG660

| Número de serie/ Serial Number | Descriptor de trayectoria/ Path Descriptor | Identificador del punto de recorrido/ Waypoint Identifier | Sobre vuelo/ Fly-Over | Curso/ Course °MAG (°T) | Variación magnética/ Magnetic variation (°) | Distancia/ Distance (NM) | Distancia hasta/ Distance to THR 05 (NM) | Dirección viraje/ Turn direction | Altitud/ Altitude (FT) | Velocidad límite/ Speed limit (KT) | VPA (°) TCH (FT) | Especificación de navegación/ Navigation Specification |
|-----------------------------------|---|--|--------------------------|----------------------------|--|-----------------------------|---|-------------------------------------|---------------------------|---------------------------------------|---------------------|---|
| 001 | IF | NG660 | - | - | - 4.8 | - | - | - | +3000 | - | - | RNP APCH |
| 002 | TF | EMEDO | - | 143 (138.2) | - 4.8 | 6.0 | - | - | 2000 | - | - | RNP APCH |
| 003 | TF | NG665 | - | 053 (048.2) | - 4.8 | 5.0 | - | - | @2000 | - | - | RNP APCH |
| 004 | TF | RW05 | Y | 053 (048.2) | - 4.8 | 5.9 | - | - | +330 | - | -3.0/50 | RNP APCH |
| 005 | CA | - | - | 053 (048.2) | - 4.8 | - | - | - | @1500 | - | - | RNP APCH |
| 006 | DF | NG670 | Y | - | - 4.8 | - | - | R | 3000 | - | - | RNP APCH |

IAF NG661

| Número de serie/ Serial Number | Descriptor de trayectoria/ Path Descriptor | Identificador del punto de recorrido/ Waypoint Identifier | Sobre vuelo/ Fly-Over | Curso/ Course °MAG (°T) | Variación magnética/ Magnetic variation (°) | Distancia/ Distance (NM) | Distancia hasta/ Distance to THR 05 (NM) | Dirección viraje/ Turn direction | Altitud/ Altitude (FT) | Velocidad límite/ Speed limit (KT) | VPA (°) TCH (FT) | Especificación de navegación/ Navigation Specification |
|-----------------------------------|---|--|--------------------------|----------------------------|--|-----------------------------|---|-------------------------------------|---------------------------|---------------------------------------|---------------------|---|
| 001 | IF | NG661 | - | - | - 4.8 | - | - | - | +3000 | - | - | RNP APCH |
| 002 | TF | EMEDO | - | 323 (318.2) | - 4.8 | 6.0 | - | - | 2000 | - | - | RNP APCH |
| 003 | TF | NG665 | - | 053 (048.2) | - 4.8 | 5.0 | - | - | @2000 | - | - | RNP APCH |
| 004 | TF | RW05 | Y | 053 (048.2) | - 4.8 | 5.9 | - | - | +330 | - | -3.0/50 | RNP APCH |
| 005 | CA | - | - | 053 (048.2) | - 4.8 | - | - | - | @1500 | - | - | RNP APCH |
| 006 | DF | NG670 | Y | - | - 4.8 | - | - | R | 3000 | - | - | RNP APCH |

**CODIFICACIÓN DE LAS ESPERAS CON FUNCIONALIDAD / CODING TABLE FOR HOLDINGS WITH FUNTIONALITY.
RNAV MUNG RWY 05**

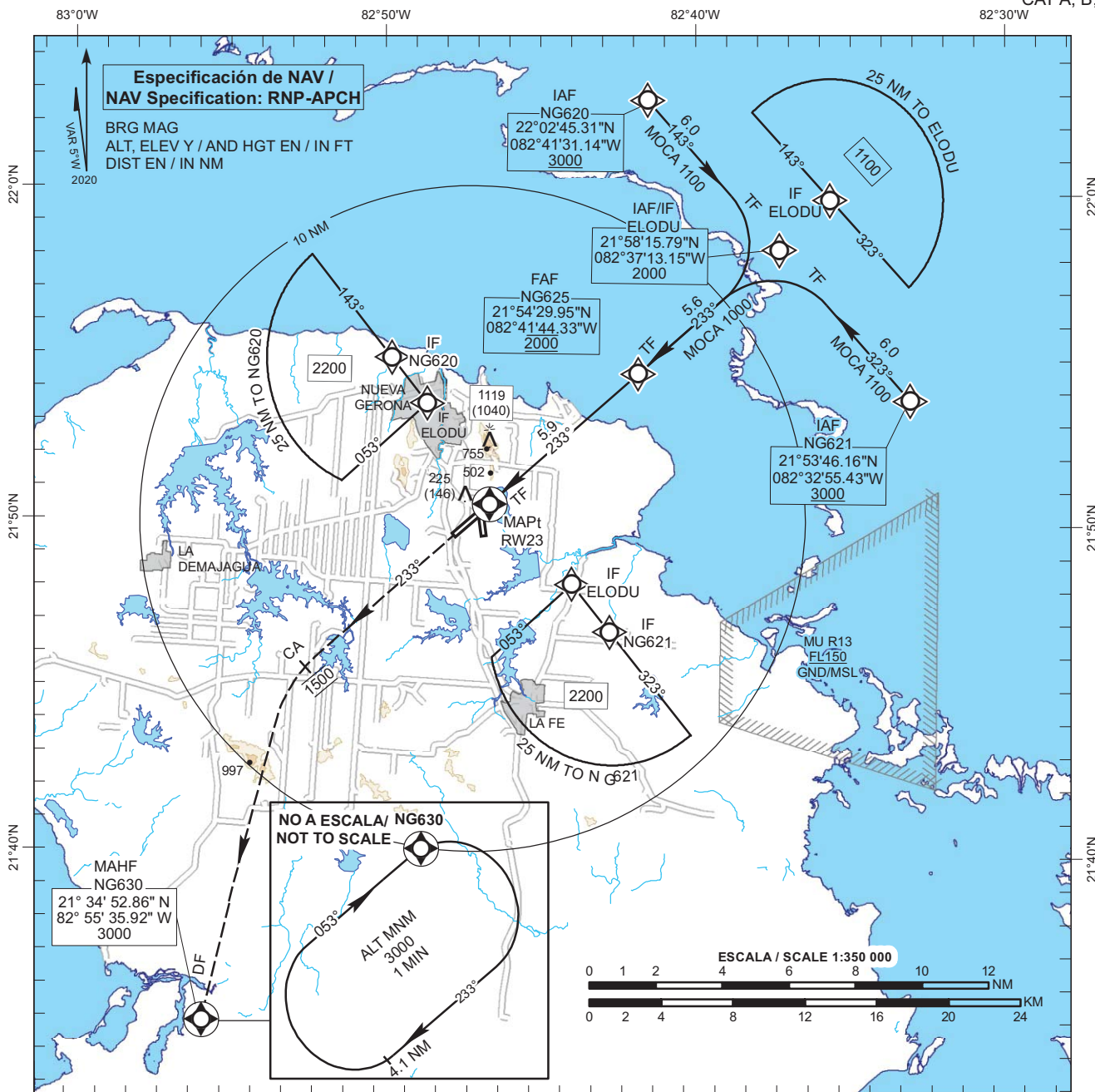
| Descriptor de trayectoria/ Path Descriptor | Identificador del punto de recorrido/ Waypoint Identifier | Rumbo de acercamiento/ Approach heading °MAG (°T) | Dirección viraje/ Distancia Turn direction/ Distance | Altitud mínima/ Minimum altitude (FT) | Altitud máxima/ Maximum altitude (FT) | Límite de Velocidad/ Speed Limit (KT) | Declinación magnética/ Magnetic declination (°) | Especificación de navegación/ Navigation Specification |
|---|--|--|--|--|--|--|--|---|
| Espera/ Holding | NG670 | 233 268 (228.3) | R /4.1NM | 3000 | FL140 | -230 | - 4.8 | RNAV-1 |

CARTA DE APROXIMACION POR INSTRUMENTOS - OACI /
INSTRUMENT APPROACH CHART - ICAO

ELEV 79
OCH REFTHR RWY 23
ELEV 62

APP 120.30
TWR 118.30

NUEVA GERONA / Rafael Cabrera
RNP (LNAV/VNAV; LNAV)
RWY 23
CAT A, B, C, D

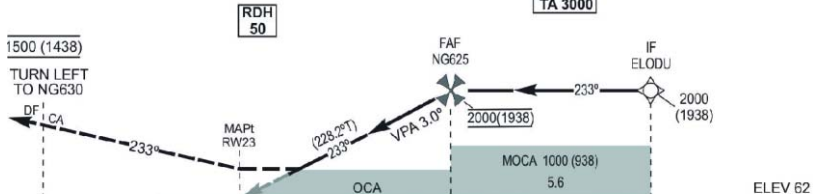


APROXIMACIÓN FRUSTRADA / MISSED APPROACH

ASCIENDA EN DERROTA 233° HASTA 1500 FT, VIRE A LA IZQUIERDA DIRECTO A PATRÓN DE ESPERA NG630 A 3000 FT Y ESPERE INSTRUCCIONES ATC / CLIMB ON TRACK 233° UNTIL 1500 FT, TURN LEFT DIRECT TO NG630 HOLDING PATERN AT 3000 FT AND EXPECT ATC INSTRUCTIONS.

NOTA / RMK:

(POR LA PÉRDIDA DE LA CAPACIDAD RNAV): ASCIENDA EN DERROTA 233° HASTA 3000 FT Y SOLICITE INSTRUCCIONES ATC / (FOR LOSS OF RNAV CAPABILITY): CLIMB ON 233° TRACK UNTIL 3000 FT AND REQUEST ATC INSTRUCTIONS.



| OCA(H) | A | B | C | D | ELEV 62 (THR RWY 23) | | | | | | | | |
|-------------------|-----------------------|-----------------------|-----------------------|------------|----------------------|----------|----------|-------------|-------------|-------------|-------------|-----------|--|
| | | | | | DISTANCIA NM | KT | 80 | 100 | 120 | 140 | 160 | 180 | |
| LNAV/VNAV | 600 (538) 2.7 KM | | | | FAF - RW23 5.9 | MIN 4:24 | SEC 3:22 | 2:56 | 2:31 | 2:12 | 1:58 | | |
| LNAV | 650 (588) 3.0 KM | | | | VSP GS 3.00° | FT 430 | 530 | 640 | 740 | 850 | 960 | | |
| CIRCULAR CIRCLING | 1100 (1021) 5.6 KM | 1500 (1421) 8.0 KM | 1600 (1521) 8.6 KM | NM to RW23 | | | | | | | | | |
| | | | | 5.0 NM | 4.0 NM | 3.0 NM | 2.0 NM | ALT / (HGT) | 1700 (1638) | 1390 (1328) | 1070 (1008) | 750 (688) | |

**TABLAS DE CODIFICACIÓN DEL PROCEDIMIENTO DE APROXIMACIÓN POR INSTRUMENTOS RNP /
RNP INSTRUMENT APPROACH PROCEDURE CODING TABLES.
MUNG RWY 23. NUEVA GERONA / RAFAEL CABRERA.**

IAF NG620

| Número de serie/ Serial Number | Descriptor de trayectoria/ Path Descriptor | Identificador del punto de recorrido/ Waypoint Identifier | Sobre vuelo/ Fly-Over | Curso/ Course °MAG (°T) | Variación magnética/ Magnetic variation (°) | Distancia / Distance (NM) | Distancia hasta/ Distance to THR 23 (NM) | Dirección viraje/ Turn direction | Altitud/ Altitude (FT) | Velocidad límite/ Speed limit (KT) | VPA (°) TCH (FT) | Especificación de navegación/ Navigation Specification |
|-----------------------------------|---|--|--------------------------|----------------------------|--|------------------------------|---|-------------------------------------|---------------------------|---------------------------------------|---------------------|---|
| 001 | IF | NG620 | - | - | -4.8 | - | - | - | +3000 | - | - | RNP APCH |
| 002 | TF | ELODU | - | 143 (138.2) | -4.8 | 6.0 | - | - | 2000 | - | - | RNP APCH |
| 003 | TF | NG625 | - | 233 (228.2) | -4.8 | 5.6 | - | - | @2000 | - | - | RNP APCH |
| 004 | TF | RW23 | Y | 233 (228.2) | -4.8 | 5.9 | - | - | +600 | - | -3.0/50 | RNP APCH |
| 005 | CA | - | - | 233 (228.2) | -4.8 | - | - | - | @1500 | - | - | RNP APCH |
| 006 | DF | NG630 | Y | - | -4.8 | - | - | L | 3000 | - | - | RNP APCH |

IAF NG621

| Número de serie/ Serial Number | Descriptor de trayectoria/ Path Descriptor | Identificador del punto de recorrido/ Waypoint Identifier | Sobre vuelo/ Fly-Over | Curso/ Course °MAG (°T) | Variación magnética/ Magnetic variation (°) | Distancia / Distance (NM) | Distancia hasta/ Distance to THR 23 (NM) | Dirección viraje/ Turn direction | Altitud/ Altitude (FT) | Velocidad límite/ Speed limit (KT) | VPA (°) TCH (FT) | Especificación de navegación/ Navigation Specification |
|-----------------------------------|---|--|--------------------------|----------------------------|--|------------------------------|---|-------------------------------------|---------------------------|---------------------------------------|---------------------|---|
| 001 | IF | NG621 | - | - | -4.8 | - | - | - | +3000 | - | - | RNP APCH |
| 002 | TF | ELODU | - | 323 (318.3) | -4.8 | 6.0 | - | - | 2000 | - | - | RNP APCH |
| 003 | TF | NG625 | - | 233 (228.2) | -4.8 | 5.6 | - | - | @2000 | - | - | RNP APCH |
| 004 | TF | RW23 | Y | 233 (228.2) | -4.8 | 5.9 | - | - | +600 | - | -3.0/50 | RNP APCH |
| 005 | CA | - | - | 233 (228.2) | -4.8 | - | - | - | @1500 | - | - | RNP APCH |
| 006 | DF | NG630 | Y | - | -4.8 | - | - | L | 3000 | - | - | RNP APCH |

IAF/IF ELODU

| Número de serie/ Serial Number | Descriptor de trayectoria/ Path Descriptor | Identificador del punto de recorrido/ Waypoint Identifier | Sobre vuelo/ Fly-Over | Curso/ Course °MAG (°T) | Variación magnética/ Magnetic variation (°) | Distancia / Distance (NM) | Distancia hasta/ Distance to THR 23 (NM) | Dirección viraje/ Turn direction | Altitud/ Altitude (FT) | Velocidad límite/ Speed limit (KT) | VPA (°) TCH (FT) | Especificación de navegación/ Navigation Specification |
|-----------------------------------|---|--|--------------------------|----------------------------|--|------------------------------|---|-------------------------------------|---------------------------|---------------------------------------|---------------------|---|
| 001 | IF | ELODU | - | - | -4.8 | - | - | - | 2000 | - | - | RNP APCH |
| 002 | TF | NG625 | - | 233 (228.2) | -4.8 | 5.6 | - | - | 2000 | - | - | RNP APCH |
| 003 | TF | RW23 | Y | 233 (228.2) | -4.8 | 5.9 | - | - | +600 | - | -3.0/50 | RNP APCH |
| 004 | CA | - | - | 233 (228.2) | -4.8 | - | - | - | @1500 | - | - | RNP APCH |
| 005 | DF | NG630 | Y | - | -4.8 | - | - | L | 3000 | - | - | RNP APCH |

**CODIFICACIÓN DE LAS ESPERAS CON FUNCIONALIDAD / CODING TABLE FOR HOLDINGS WITH FUNTIONALITY.
RNAV MUNG RWY 23**

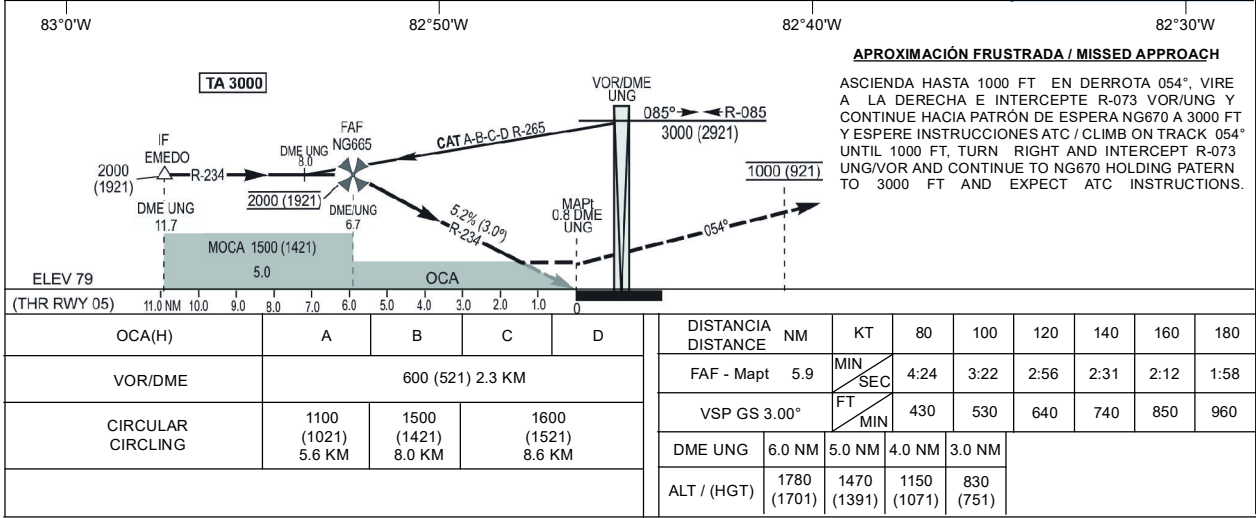
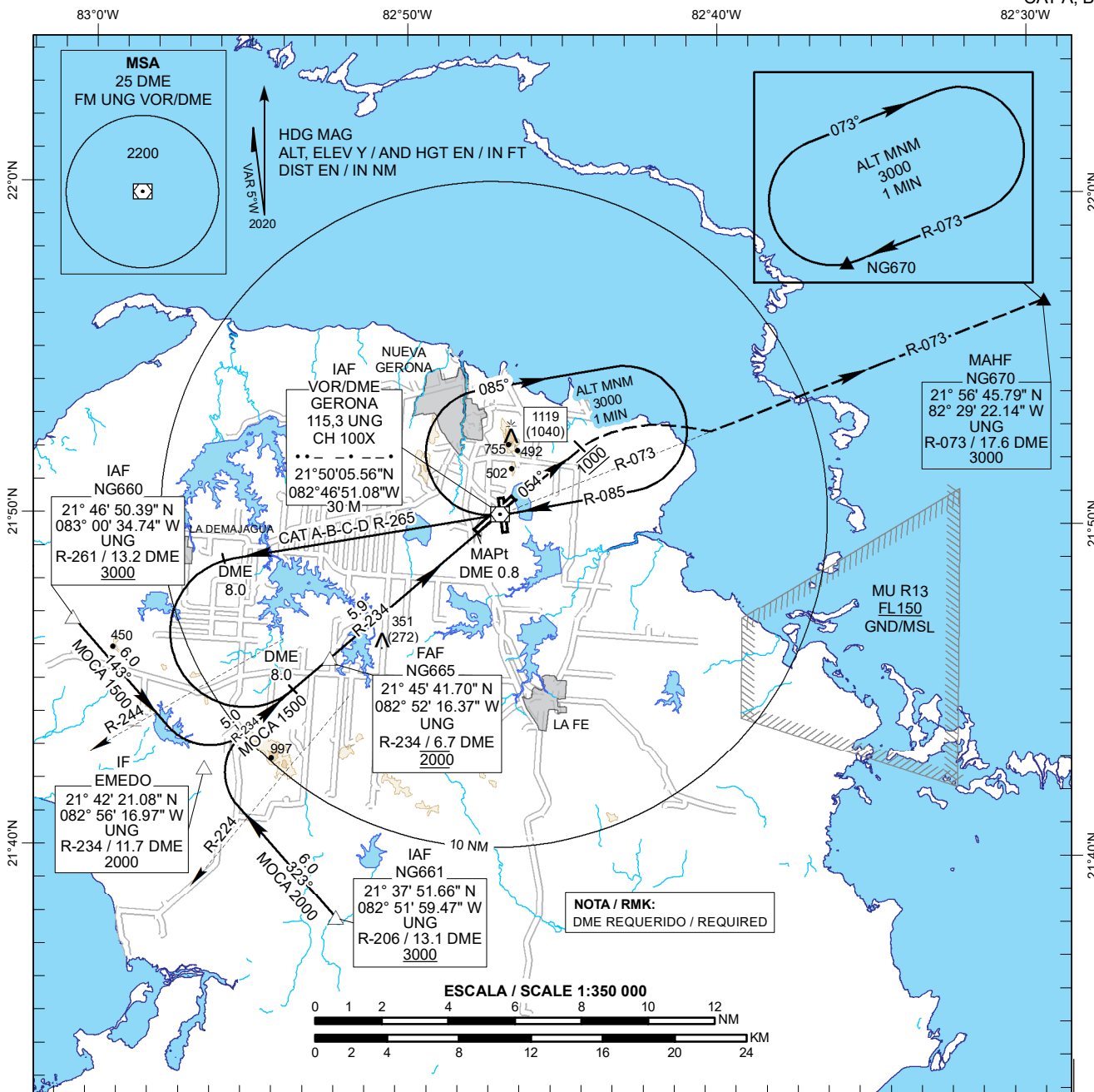
| Descriptor de trayectoria/ Path Descriptor | Identificador del punto de recorrido/ Waypoint Identifier | Rumbo de acercamiento/ Approach heading °MAG (°T) | Dirección viraje/ Turn direction/ Distance | Altitud mínima/ Minimum altitude (FT) | Altitud máxima/ Maximum altitude (FT) | Límite de Velocidad/ Speed Limit (KT) | Declinación magnética/ Magnetic declination (°) | Especificación de navegación/ Navigation Specification |
|---|--|--|--|--|--|--|--|---|
| Espera/ Holding | NG630 | 053 (048.2) | R /4.1NM | 3000 | FL140 | -230 | -4.8 | RNAV-1 |

CARTA DE APROXIMACION POR INSTRUMENTOS - OACI /
INSTRUMENT APPROACH CHART - ICAO

ELEV 79
OCH REF THR RWY 05
ELEV 79

APP 120.30
TWR 118.30

NUEVA GERONA / Rafael Cabrera
VOR
RWY 05
CAT A, B, C, D

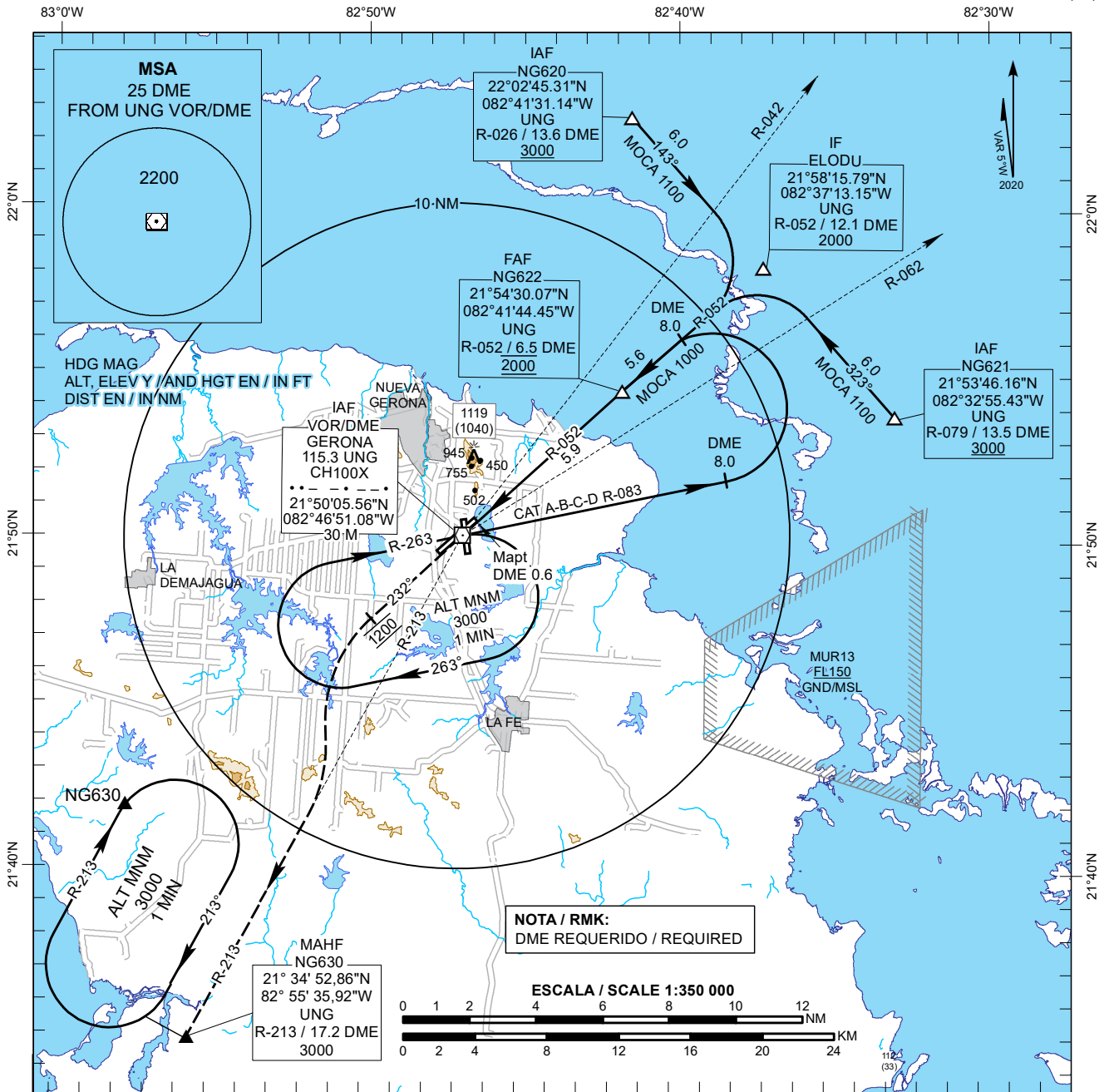


CARTA DE APROXIMACION POR INSTRUMENTOS - OACI /
INSTRUMENT APPROACH CHART - ICAO

ELEV 79
OCH REF THR RWY 23
ELEV 62

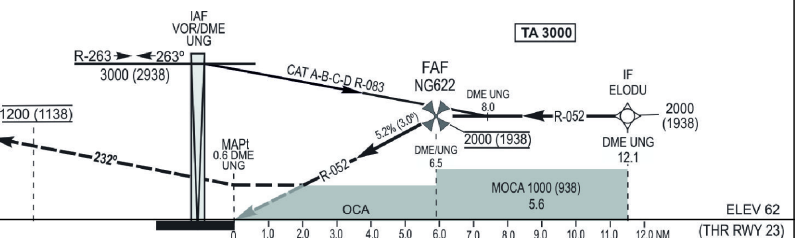
APP 120.30
TWR 118.30

NUEVA GERONA / Rafael Cabrera
VOR
RWY 23
CAT A, B, C, D



APROXIMACIÓN FRUSTRADA / MISSED APPROACH

ASCIENDA HASTA 1200 FT EN DERROTA 232°, VIRE A LA IZQUIERDA E INTERCEPTE R-213 VOR/UNG Y CONTINUE HACIA PATRÓN DE ESPERA NG630 A 3000 FT Y ESPERE INSTRUCCIONES ATC / CLIMB ON TRACK 232° UNTIL 1200 FT, TURN LEFT AND INTERCEPT R-213 UNG/VOR AND CONTINUE TO NG630 HOLDING PATTERN TO 3000 FT AND EXPECT ATC INSTRUCTIONS.



| | | | | | | | | | | | | |
|-------------------|-----------------------|-----------------------|-----------------------|---|----------------|-------------|-------------|-------------|-----------|------|------|------|
| OCA(H) | A | B | C | D | DISTANCIA NM | KT | 80 | 100 | 120 | 140 | 160 | 180 |
| VOR/DME | 750 (688) 3.5 KM | | | | FAF - RW23 5.9 | MIN | 4:24 | 3:22 | 2:56 | 2:31 | 2:12 | 1:58 |
| CIRCULAR CIRCLING | 1100 (1021) 5.6 KM | 1500 (1421) 8.0 KM | 1600 (1521) 8.6 KM | | VSP GS 3.00° | FT | 430 | 530 | 640 | 740 | 850 | 960 |
| | | | | | DME UNG | 6.0 NM | 5.0 NM | 4.0 NM | 3.0 NM | | | |
| | | | | | ALT / (HGT) | 1830 (1768) | 1510 (1448) | 1190 (1128) | 880 (818) | | | |

CARTA DE APROXIMACION VISUAL /
VISUAL APPROACH CHART

ELEV 79
OCH REF TO AD ELEV

APP 120.30
TWR 118.30

NUEVA GERONA / Rafael Cabrera

